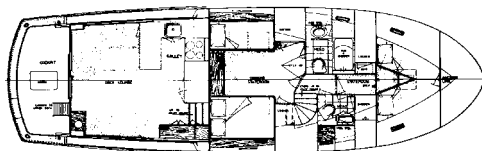


Hatteras 48 LRC

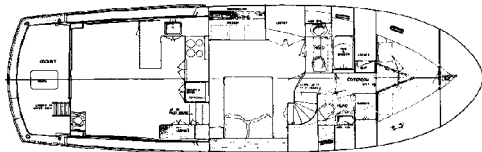
1976-81



The Hatteras 48 LRC is a full displacement trawler whose raised pilothouse lines and rock-solid construction made her a favorite with serious cruising enthusiasts. One of Jack Hargrave's most enduring designs, the 48 LRC is a proven offshore passage maker. Heavily built on a solid fiberglass hull, hard aft chines reduce roll and a full keel protects the props and rudders. Most 48s were delivered with two-stateroom teak-and-mahogany interiors featuring a full-beam salon with L-shaped settee and coffee table to port, U-shaped galley (with breakfast bar) forward, and spiral companionway to starboard. The full-beam master stateroom of the Hatteras 48 is amidship with built-in dresser and private ensuite head with stall shower. Forward, the guest stateroom has V-berths, storage drawers, and private access to a head with shower. The pilothouse, four steps up from the salon, includes a U-shaped dinette, single watch berth, and port/starboard deck doors. Topside, the boat deck is designed to carry a dinghy and hoist. A cockpit transom door assists boarding. No lightweight, twin 112hp GM 4-53N diesels cruise the Hatteras 48 LRC at 8-9 knots. Over 40 were built.



Two Staterooms



Three Staterooms

Specifications

Length.....	48'10"	Clearance	16'11"
LWL.....	43'4"	Fuel	1,390 gals.
Beam.....	16'6"	Water	430 gals.
Draft.....	4'6"	Waste.....	80 gals.
Weight.....	54,000#	Hull Type.....	Displacement