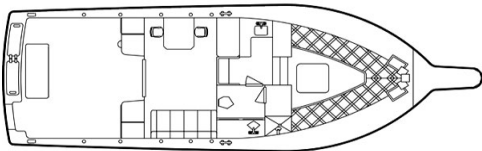
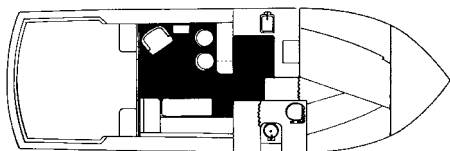


Albemarle 325 Convertible

1988-2003



Introduced in 1988, the Albemarle 325 is one of the few flybridge boats under 35 feet produced in recent years. The 325 is a handsome boat with rakish styling and a well-flared bow, and her large 80-square-foot cockpit offers the fishing space found in many larger boats. In spite of her small size, the galley-down interior of the Albemarle 325 boasts a surprisingly roomy salon with room for a convertible sofa and two chairs. The enclosed head is one of the largest on any 32-footer and includes a separate stall shower. Air conditioning, teak cabinets and trim, and an entertainment center were standard. To address complaints about a harsh ride, a major redesign occurred in 1999 when Albemarle engineers moved the engines forward 10 inches, replaced the original three-tank configuration with a single fuel tank, and recessed the trim tabs into the hull. Cabin headroom was also increased in 1999, and a transom door and lift-out fish box were added in the cockpit. Early models with 330hp Volvo gas engines cruise at 22 knots (30+ knots top). Later models with twin 350hp 3116 Cat diesels cruise in the mid 20s (around 30 knots top).

Specifications

Length w/Pulpit.....	34'9"	Fuel	300 gals.
Hull Length	32'2"	Water	30 gals.
Beam.....	11'0"	Waste.....	25 gals.
Draft.....	3'0"	Hull Type.....	Modified-V
Weight.....	18,000#	Deadrise Aft	18°